

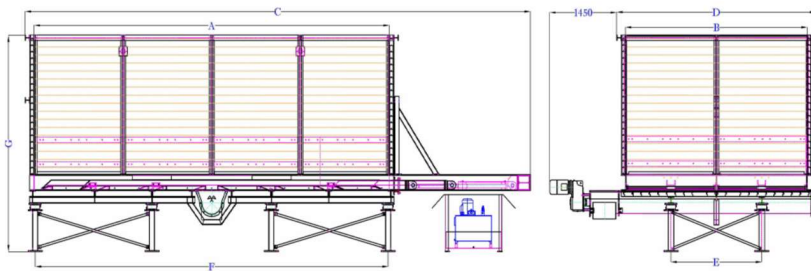
# Wooden push-floor solid feeders with stainless steel bottom



Feed systems suitable for processing silage or pre-mixed materials (80% silage + 20% by-products).  
The material is conveyed into the central discharge point of the machine via the action of 2 alternating pushers.  
A screw on the bottom of the machine carries the biomass to any other screws or a pump.



## OVERALL DIMENSIONS DIAGRAM



### Standard outfit:

Galvanized steel load-bearing framework, AISI 304 bottom, 90 mm thick wooden walls, 500 mm high AISI 304 internal wall lining, hydraulic control unit for pusher drive, extraction screw l=5000 m (max. capacity 22m<sup>3</sup>/h) in AISI 304, weighing system with 8 load cells complete with control unit and display.

### Optional outfit:

Sliding roof in AISI 304 or galvanized steel with drive system.  
AISI 304 loader for connection to any pump.

Push-floor solid feeder	(A)	(B)	(C)	(D)	(E)	(F)	(G)	motors for extract. screw + hyd. ctrl unit kW	Loadless weight
SB	mm	mm	mm	mm	mm	mm	mm		(G)
SB 60 m <sup>3</sup>	7470	3830	10612	4192	1910	7410	3260	7,5 + 11	13200
SB 80 m <sup>3</sup>	7470	3830	10612	4192	1910	7410	4040	7,5 + 11	14000
SB 120 m <sup>3</sup>	9860	3830	13020	4192	1910	9836	4040	7,5 + 11	17000

Technical data is indicative only. The manufacturer reserves the right to modify it at any time.  
MAXIMUM PERMITTED LOADS: SB60 36 ton - SB80 48 ton - SB120 70 ton